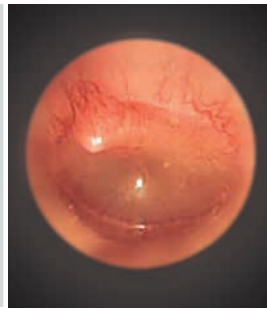
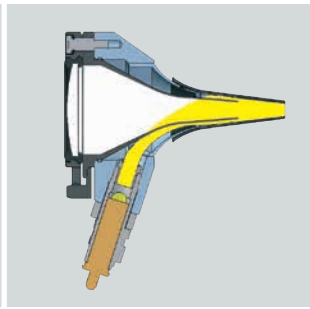




High-quality Fiber Optic (F.O.) illumination with high-intensity XHL Xenon Halogen bulb.



HEINE BETA® 200 Fiber Optic (F.O.) Otoscope

The ultimate in performance and quality

Solid, all-metal construction. A quality instrument for the physician's office with Fiber Optic (F.O.) illumination.



- ∴ **All-metal housing matt-chrome-plated.** Durable, long-lasting and easy to clean.
- ∴ **Instrument head matt-black inside.** Eliminates reflexes.
- ∴ **Distal Fiber Optic (F.O.) illumination with XHL Xenon Halogen Technology.** Homogeneous, reflex-free illumination of ear canal and tympanum.
- ∴ Large, scratch-resistant **glass viewing window made of multi-coated optical glass with 3x magnification.** Unobstructed edge-to-edge view, distortion-free image.
- ∴ **Swivelling viewing window built into instrument.** Useful for instrumentation, cannot be mislaid.
- ∴ **Insufflation port.** Reliable test of tympanic mobility.

- ∴ Fiber Optic (F.O.) illumination
- ∴ All-metal housing
- ∴ 3x magnification
- ∴ Silica glass viewing window

BETA 200 F.O. Otoscope	2.5V	3.5V
with 4 reusable tips, without handle	B-001.11.501	B-002.11.501
same, without tips, without handle	B-001.11.500	B-002.11.500
XHL Xenon Halogen spare bulb	X-001.88.077	X-002.88.078

HEINE BETA® 200 Fiber Optic (F.O.) ENT Diagnostic Sets

Set complete with: **BETA 200 Fiber Optic (F.O.) Otoscope**
 1 set (4 pcs.) of reusable tips (B-000.11.111)
 5 of both AllSpec disposable tips 2.5 and 4 mm Ø (B-000.11.119)
 spare bulb
 hard case



BETA 200 F.O. Otoscope Sets	2.5V	3.5V (NiMH)	3.5V Li ION
BETA battery handle	B-141.10.118		
BETA R rechargeable handle for mains socket		B-141.20.376	B-141.27.376
BETA TR rechargeable handle with plug-in transformer		B-141.20.384	B-141.27.384
BETA NT rechargeable handle and NT300 charger		B-141.20.420	
BETA L rechargeable handle and NT300 charger			B-141.29.420

: Rechargeable handle with charge status display in the bottom insert.